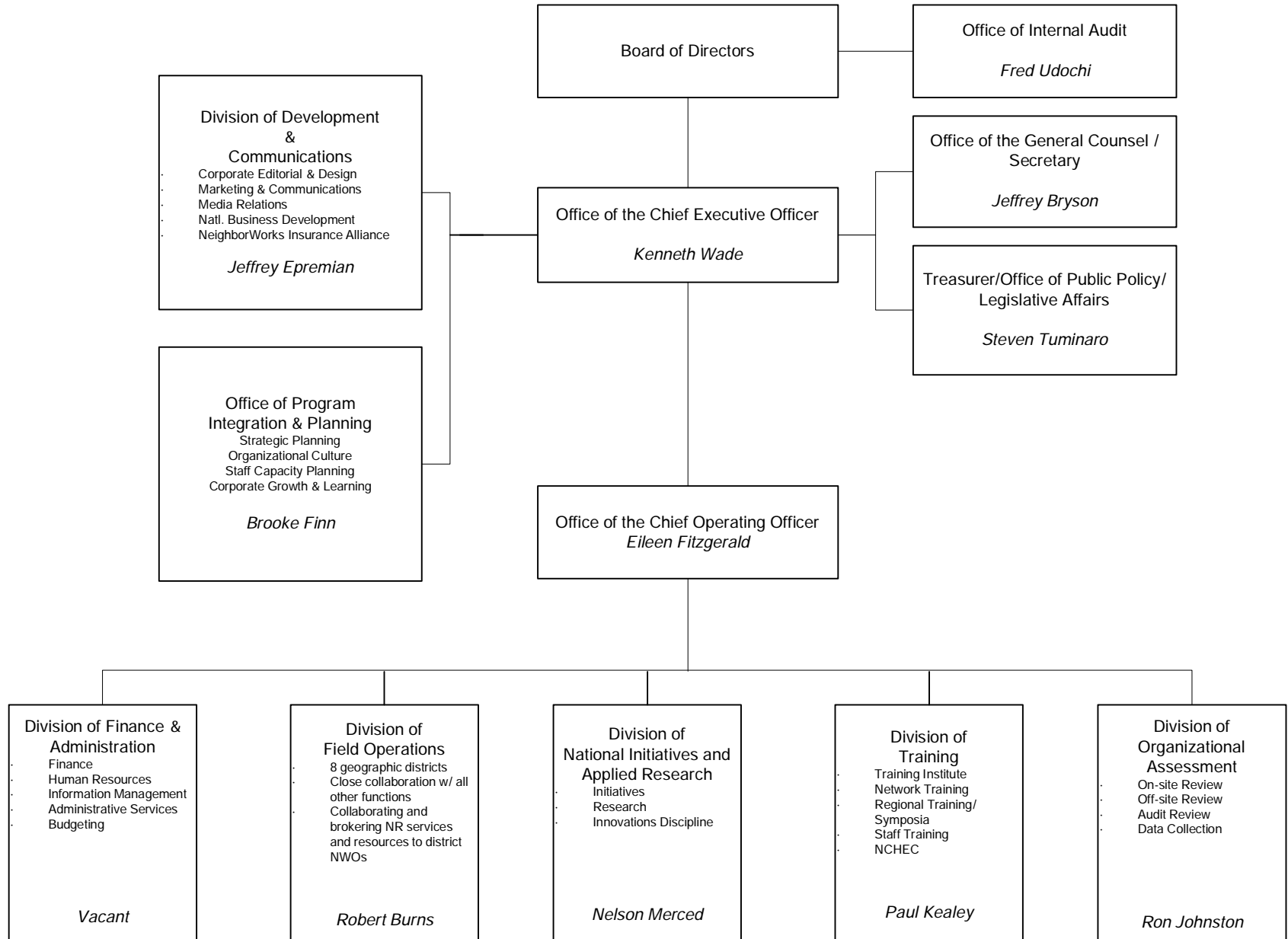


# NeighborWorks® America Organization Chart

01/12/2006



**Division of Development & Communications**  
 Corporate Editorial & Design  
 Marketing & Communications  
 Media Relations  
 Natl. Business Development  
 NeighborWorks Insurance Alliance  
*Jeffrey Epreman*

**Office of Program Integration & Planning**  
 Strategic Planning  
 Organizational Culture  
 Staff Capacity Planning  
 Corporate Growth & Learning  
*Brooke Finn*

**Board of Directors**

**Office of the Chief Executive Officer**  
*Kenneth Wade*

**Office of the Chief Operating Officer**  
*Eileen Fitzgerald*

**Office of Internal Audit**  
*Fred Udochi*

**Office of the General Counsel / Secretary**  
*Jeffrey Bryson*

**Treasurer/Office of Public Policy / Legislative Affairs**  
*Steven Tuminaro*

**Division of Finance & Administration**  
 Finance  
 Human Resources  
 Information Management  
 Administrative Services  
 Budgeting  
  
*Vacant*

**Division of Field Operations**  
 8 geographic districts  
 Close collaboration w/ all other functions  
 Collaborating and brokering NR services and resources to district NWOs  
  
*Robert Burns*

**Division of National Initiatives and Applied Research**  
 Initiatives  
 Research  
 Innovations Discipline  
  
*Nelson Merced*

**Division of Training**  
 Training Institute  
 Network Training  
 Regional Training / Symposia  
 Staff Training  
 NCHEC  
  
*Paul Kealey*

**Division of Organizational Assessment**  
 On-site Review  
 Off-site Review  
 Audit Review  
 Data Collection  
  
*Ron Johnston*

